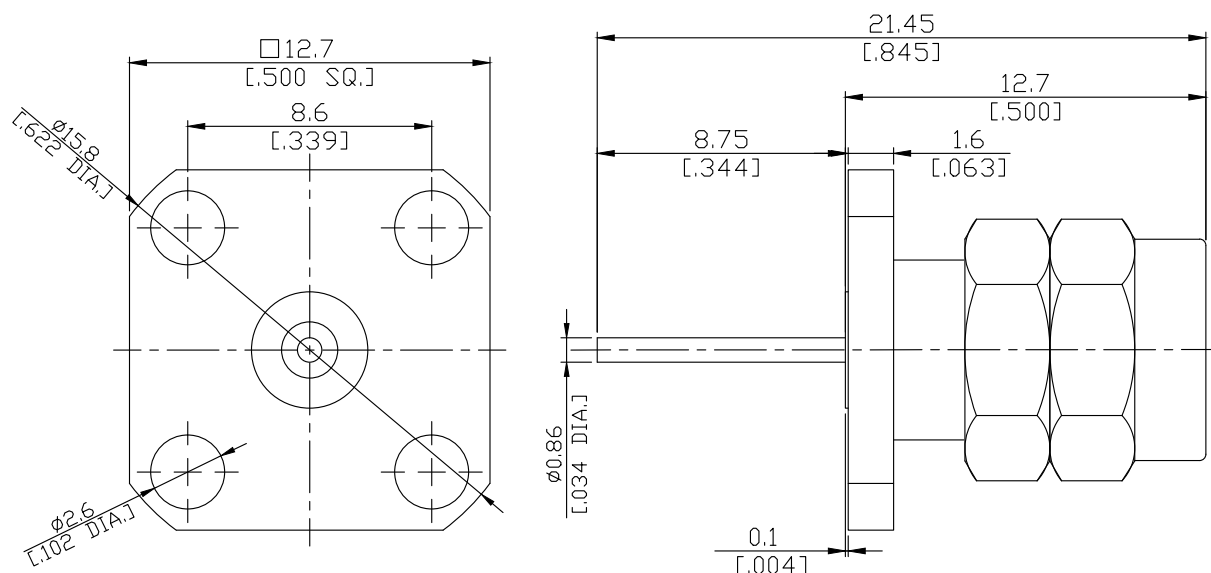


2.4mm plug (male) Connector Solder Attachment 4 Hole Flange Mount  
Stub Terminal, 8.6mm (.339 inch) Hole Spacing DC-50GHz VSWR1.15

## Q1GFA50-2145A / 9XX



All dimensions are in mm [inch]

Tolerances according to DIN ISO 2768-mH

### Interface

According to

IEC 61169-40

Mechanically compatible with

1.85mm

### Electrical Data

Impedance

50 Ω

Frequency

DC to 50 GHz

VSWR (Return Loss)

≤ 1.15 (≥ 23 dB)

Insertion Loss

≤ 0.05 × √F (GHz) dB

Insulation Resistance

≥ 5 GΩ

Test Voltage

500 V rms

Working Voltage (at sea level)

150 V rms

Power Handling (at 20 °C, sea level, VSWR 1.0)

≤ 100 W @ 1 GHz

### Material And Plating

Piece Parts	Material	Plating
Centre contact	Beryllium Copper	Gold plating, 3 μinch (Non-magnetic nickel-phosphorus underplating, 80 μinch)
Body	Stainless Steel	Passivated
Insulator	PEI/PTFE	
Gasket	Silicone Rubber	
Coupling nut	Stainless Steel	Passivated

2.4mm plug (male) Connector Solder Attachment 4 Hole Flange Mount  
Stub Terminal, 8.6mm (.339 inch) Hole Spacing DC-50GHz VSWR1.15

## Q1GFA50-2145A / 9XX

### Mechanical Data

Coupling mechanisms	Screw-lock
Mating Cycles	≥ 500
Centre Contact	Soldered
Terminal Type	Stub
Captivated Type	Mechanical Captivation
Center contact captivation	≥ 20 N
Coupling test torque	1.65 Nm
Recommended torque	0.80 Nm to 1.10 Nm

### Environmental Data

Temperature Range	-55°C to +100°C
Thermal shock	IEC 61169-1, Subclause 9.4.4
Corrosion	IEC 61169-1, Subclause 9.4.6
Vibration	IEC 61169-1, Subclause 9.3.3
Shock	IEC 61169-1, Subclause 9.3.14
Moisture Resistance	IEC 61169-1, Subclause 9.4.3
RoHS	compliant

### Packing

Single or 100